

# Product Description

## NFE2L2(L30F) Mutant

**Catalog Number:** 10448

**Synonyms:** Nuclear factor (erythroid-derived 2)-like2, Nrf2

**Background:** NFE2L2 protein is encoded by NFE2L2 gene. It is a basic leucine zipper protein that regulates the expression of antioxidant proteins that protect against oxidative damage triggered by injury and inflammation. Several drugs that stimulate the NFE2L2 pathway are being studied for treatment of diseases that are caused by oxidative stress.

**Amino Acid Sequence:** (1-170)

MMDLELPPLPGLPSQQDMDLIDILWRQDIDFGVSREVF  
FSQRRKEYELEKQKKLEKERQEQQLQKEQEKAFFAQLQL  
DEETGEFLPIQPAQHISQSETSGSANYSQVAHIPKS  
DALYFDDCMQLLAQTFFVDDNEVSSATFQSLVP  
DIPGHIESPVFIATNQAQSPETSVA

**Source:** Human, recombinant full length, His<sub>6</sub>-tag

**Expression Host:** E. coli

**Molecular Weight:** 26 kDa

**Purity:** > 99% by SDS-PAGE

**Constituents:** 20 mM Tris-HCl, pH8.0, 150 mM NaCl.

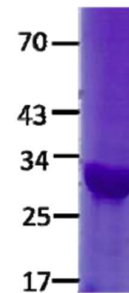
**Physical Appearance:** White or clear

**Concentration:** 1 mg/mL

**Storage:** -80°C

### Preparation Instructions

Adding of 10 mM  $\beta$ -mercaptoethanol or 1 mM DTT into the solution to protect the protein is recommended and using of non-ionic detergents such as n-Dodecyl  $\beta$ -D-maltoside (DoDM) or polyethylene detergents (e.g. C<sub>12</sub>E<sub>10</sub>) also help to stabilize the protein. Avoid repeated freezing and thawing.



The purity of His-tagged NFE2L2(L30F) was determined by SDS-PAGE and Coomassie Brilliant Blue Staining.

### References

1. Moi P et al., Proc. Natl. Acad. Sci. U.S.A. 91 (21): 9926-30.
2. Gold R et al., N. Engl. J. Med. 367 (12): 1098-107.

FOR RESEARCH USE ONLY. NOT FOR DIAGNOSTIC APPLICATIONS